

## All the information you need to deploy Neovest at your firm.

### [Neovest \(Desktop\) installation guide](#)

[Pages 02 - 06](#)

Step by step walkthrough of the Neovest installation wizard.

### [System requirements & firewall setup](#)

[Pages 07 - 10](#)

Recommended PC hardware specifications.

Ports and IPs you will have to open on your firewall to connect.

Remote Router Servers (RRS) specifications.

### [How to access UAT](#)

[Pages 11 - 12](#)

Instructions to log into the Neovest simulation environment.

Step by step walkthrough of the Neovest desktop installation

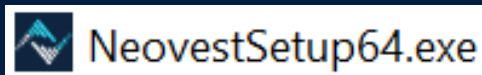
## Step 1: Download the Neovest installer

To download the Neovest installer from our secured website please click on the link below:

[support.neovest.com](https://support.neovest.com)

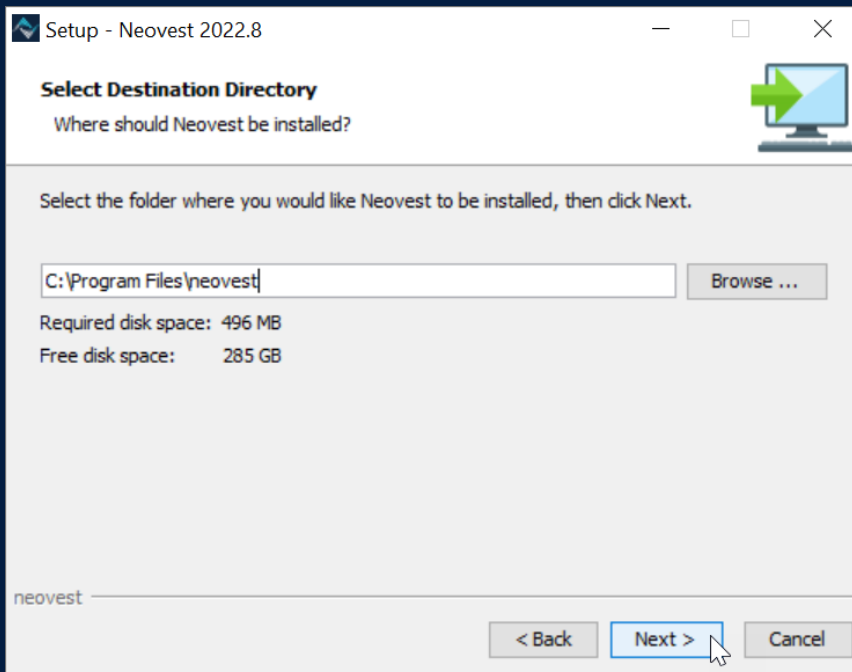
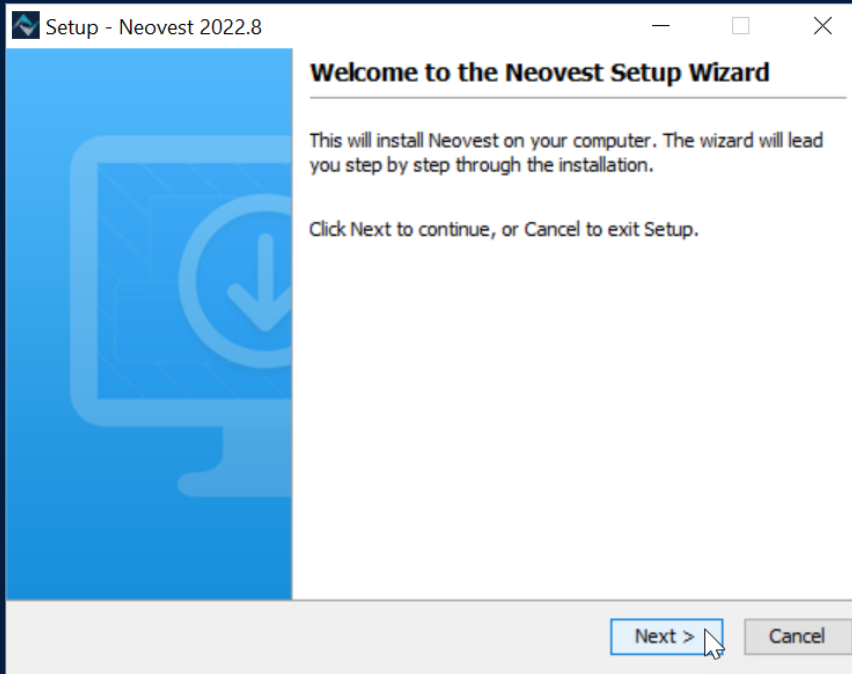
## Step 2: Run the installer

The Neovest installer should be run by a user that has “administrator” rights on the machine.

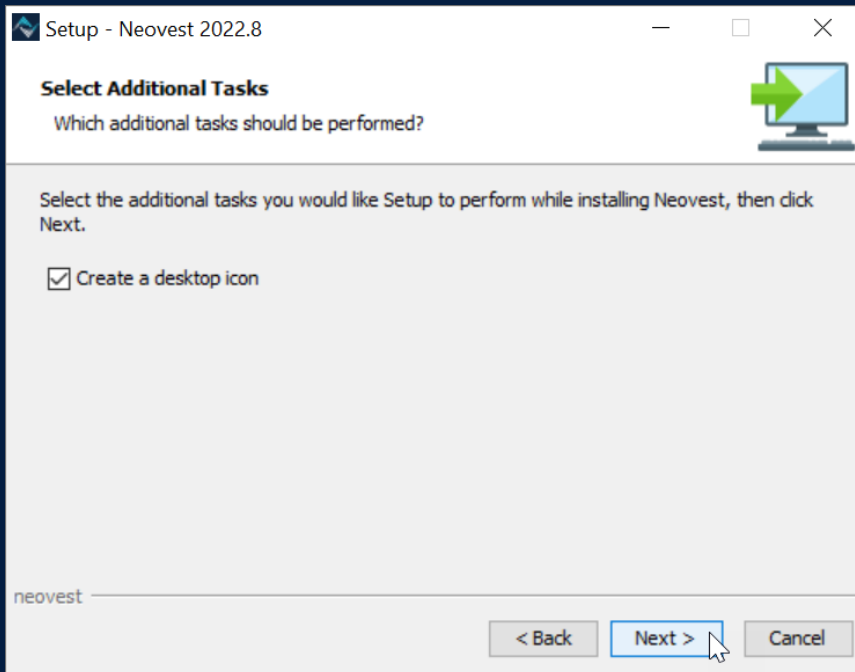
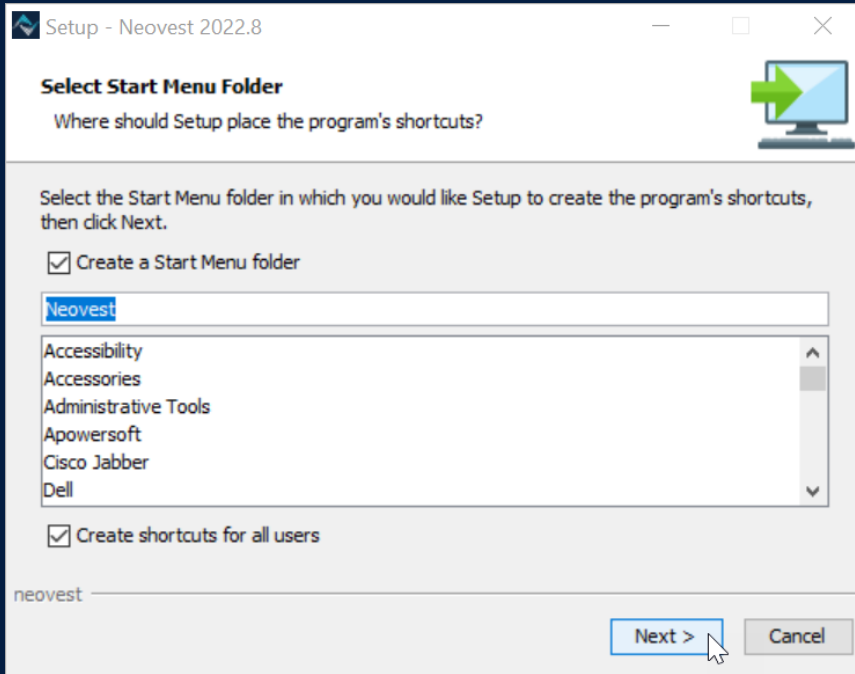


**New York | Orem | London | Hong Kong | Singapore | Sydney**

Below is a step by step view of the Neovest installation wizard.

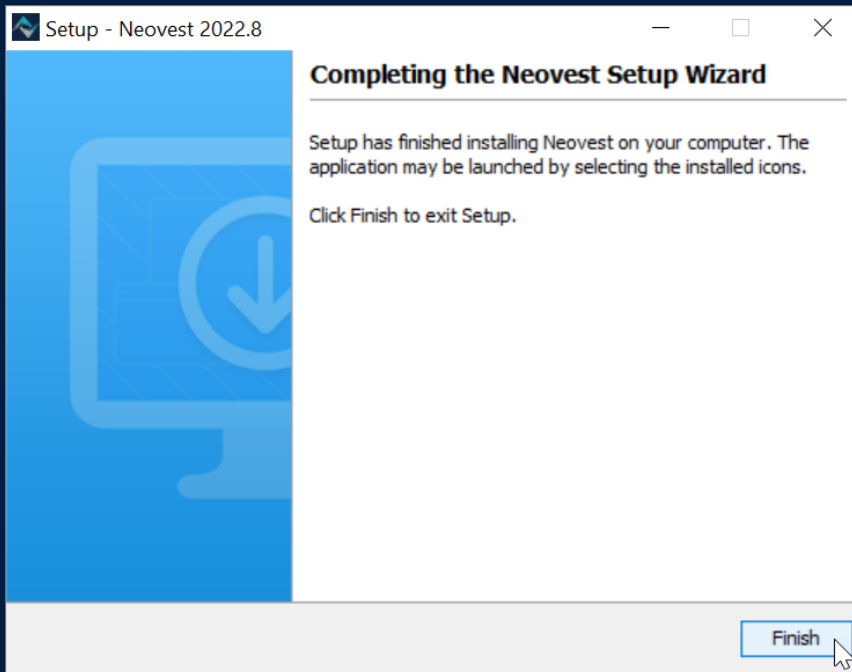
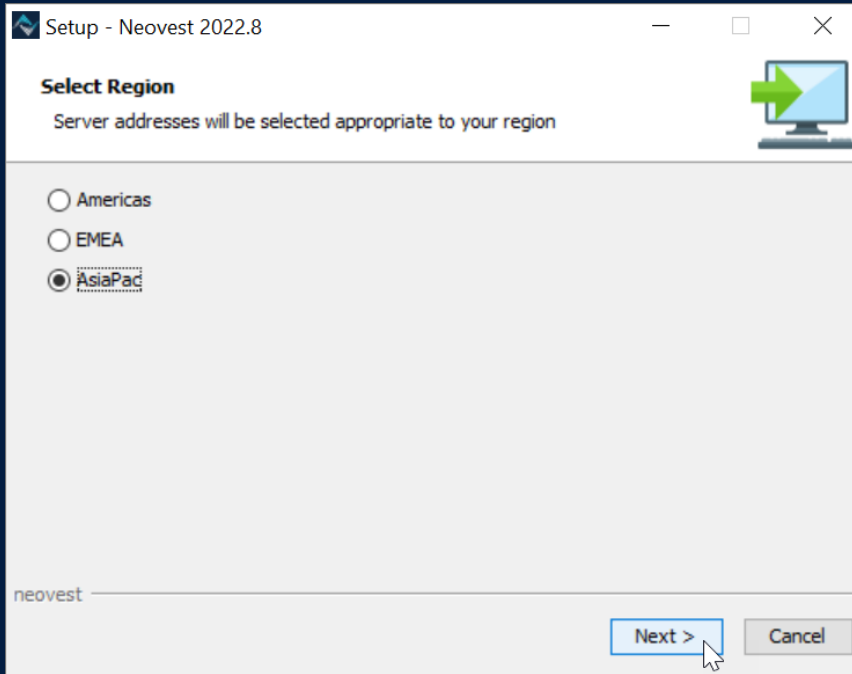


**New York | Orem | London | Hong Kong | Singapore | Sydney**



**New York | Orem | London | Hong Kong | Singapore | Sydney**

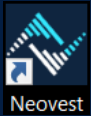
Please select the region that is closest to the location of the user.



**New York | Orem | London | Hong Kong | Singapore | Sydney**

### Step 3: Login into production

You should now see a Neovest icon on your desktop.



Once you launch Neovest a login window will appear.



The **User Name** and **Domain** will be provided by the Neovest team during onboarding.

The **Password** is set by the users themselves during the onboarding process. An email will be sent to them privately, inviting them to create their password and set up security questions.

**New York | Orem | London | Hong Kong | Singapore | Sydney**

## System Requirements

Client machines must have the following specifications.

### Recommended:

- ✓ Windows 10 (64-bit)
- ✓ Intel quad-core i7 or better
- ✓ 16GB RAM
- ✓ 5GB free Disk Space
- ✓ 30M Available Bandwidth to our datacenter(s)\*

\*Dedicated bandwidth – amount depends on usage. Quant or basket trading firms should contact us to discuss bandwidth requirements.

**New York | Orem | London | Hong Kong | Singapore | Sydney**

## Firewalls - Production

To access Neovest's production datacentres the following ports must be open.

The following IP addresses will need to be opened on **Port 5600**.

IP	Host	Port	Location
<b>199.36.68.10</b>	directfeed2.neovest.com	5600	United States
<b>199.36.71.10</b>	directfeed.neovest.com	5600	United States
<b>205.217.20.201</b>	ukdirectfeed.neovest.com	5600	United Kingdom
<b>27.111.203.4</b>	hkdirectfeed.neovest.com	5600	Hong Kong

The following IP addresses will need to be opened on **Ports 9793, 9794 & 9797**.

IP	Host	Port	Location
<b>199.36.68.14</b>	savoe1.neovest.com	9793 9794	United States
<b>199.36.68.15</b>	savoe2.neovest.com	9793 9794 9797	United States
<b>199.36.71.15</b>	oe.us2.neovest.com	9793 9794	United States
<b>205.217.20.202</b>	ukoe.neovest.com	9793 9794	United Kingdom
<b>27.111.203.6</b>	hkoe.neovest.com	9793 9794 9797	Hong Kong

HTML content will go over https port **443** with **\*.prod.neovest.com** DNS.

**New York | Orem | London | Hong Kong | Singapore | Sydney**



## Firewalls – UAT

To connect to the Neovest UAT/Simulation environment, the following IP addresses will need to be opened on **Port 5600**.

IP	Host	Port	Location
<b>199.36.68.141</b>	directfeedsim.neovest.com	5600	United States

To connect to the Neovest UAT/Simulation environment, the following IP addresses will need to be opened on **Port 9798**.

IP	Host	Port	Location
<b>199.36.68.16</b>	oesim.neovest.com	9798	United States

HTML content will go over https port **443** with **\*.sim.neovest.com** DNS.

**New York | Orem | London | Hong Kong | Singapore | Sydney**

## Remote Router Server (RRS) – System Requirements

### Recommended:

- ✓ Windows Server 2016 R2 64-bit
- ✓ 16GB+ RAM
- ✓ Xeon processor with 8 cores
- ✓ 100GB available disk space
- ✓ Physical Server with Hyperthreading disabled

For additional information, please contact your account manager or

[support@neovest.com](mailto:support@neovest.com)

**Americas** +1 800 433 4276

**EMEA** +44 808 189 0330

**APAC** +852 800 906 160

**New York | Orem | London | Hong Kong | Singapore | Sydney**

## Login into Neovest' s UAT/simulation environment

UAT/simulation logins allow users to submit dummy orders to get used to the look and feel of Neovest.

Please contact your Neovest account manager if you need access to UAT/simulation logins.

To login into UAT/simulation you will have to set your Neovest to point towards our UAT servers.

Upon launching Neovest click on "Setup".



**New York | Orem | London | Hong Kong | Singapore | Sydney**

Select **Simulated Trading**.

Populate the **Host** and **Port** details as per below and click "OK".

### Authentication Server

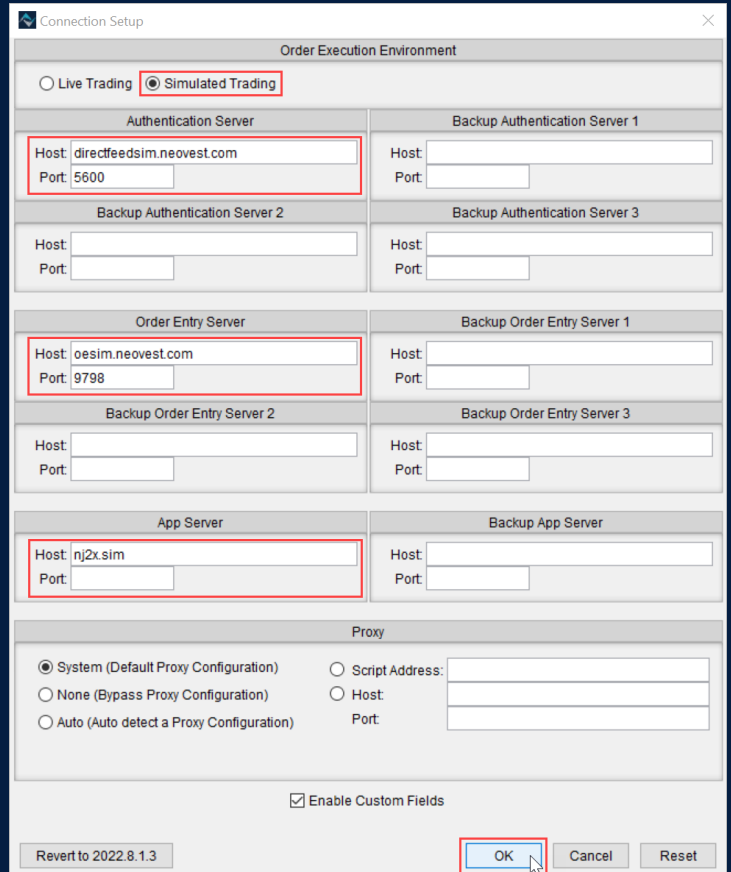
Host: directfeedsim.neovest.com  
Port: 5600

### Order Entry Server

Host: oesim.neovest.com  
Port: 9798

### App Server

Host: nj2x.sim  
Port: No port is needed



Neovest will now state **Simulated Trading Environment** in red on the login window.

You are ready to login into simulation.



**New York | Orem | London | Hong Kong | Singapore | Sydney**